

Frequently Asked Questions

WHAT IS THE DIOCESE OF LANSING?

The diocese encompasses over 70 parishes in four metro areas (Ann Arbor, Flint, Jackson, and Lansing) and covers 10 counties: Clinton, Eaton, Genesee, Hillsdale, Ingham, Jackson, Lenawee, Livingston, Shiawassee and Washtenaw. The diocesan offices assist the bishop in fulfilling his role as chief shepherd to sanctify, teach, and govern the Diocese of Lansing.

IS THE DIOCESE FINANCIALLY SOUND?

Yes, the Diocese of Lansing is financially sound, and that stability allows us to conduct a campaign that focuses on making our schools ever more On Mission, Affordable and Accessible. This campaign is part of the long-term vision for the diocese, a vision of a thriving and growing community where an authentically Catholic education is available to all families who desire it for their children.

WHAT IS A CAPITAL CAMPAIGN?

A capital campaign is an effort to raise money in a fairly brief period to pay for a significant project or to build up a large fund for future use. For a Catholic diocese or parish, this refers to gifts and pledges over and above parishioners' regular giving to the Sunday collection. Parishioners will be invited to pledge their faithful generosity over five years.

WHY DO YOU EMPHASIZE MAKING A PLEDGE?

Pledges allow donors to consider giving more than is possible through one-time gifts. Parishioners can be more generous to their parishes' campaign and the diocese through incremental giving over time. Additionally, pledging is not as big a strain on household budgets. This is important in a campaign of this magnitude.

WHO WILL BE ASKED TO GIVE?

Over the course of the campaign, every household in every parish in the diocese will be asked to make a sacrificial gift in support of the effort.

WHEN WILL THE CAMPAIGN TAKE PLACE?

Preparations for the campaign began in May 2023, and active appeals will take place in three waves, the last of which will conclude in December 2025.

WILL ALL THE PARISHES PARTICIPATE IN THE CAMPAIGN?

Yes, every parish across the diocese will participate in the campaign in either 2024 or 2025.

WHY RUN THE CAMPAIGN IN WAVES INSTEAD OF ALL AT ONCE?

We want every parish to have the best experience possible and maximize its fundraising efforts with extensive support and direction from the diocese and our campaign partner, the Steier Group. To accomplish that goal for more than 70 parishes, it becomes more effective and reasonable to conduct appeals in stages over a slightly longer period.



*The campaign for Catholic education
in the Diocese of Lansing*

WE JUST FINISHED A DIOCESAN CAMPAIGN. WHY DO WE NEED ANOTHER ONE? WHY NOW?

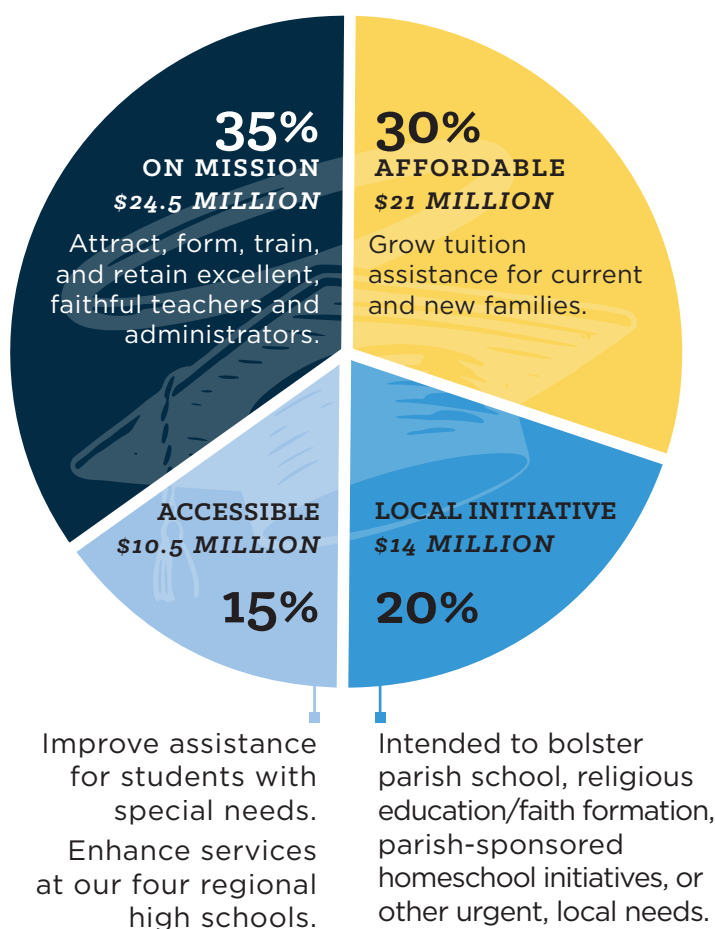
Thank you to all those who gave to the *Witness to Hope* campaign! It was hugely successful in helping parishes accomplish many worthy projects and setting up endowments at The Catholic Foundation in support of education, seminarians, charities, and other purposes of the wider Church.

Under the dynamic leadership of Bishop Boyea, the diocese is on firm footing and the stability of our parishes is a blessing. As Bishop has said, "If we don't keep moving forward, we fall back."

We want to build on the great work already happening in our Catholic Schools as well as provide even more support for our teachers, students, families, and parishes. After years of listening, planning, and the positive results of a feasibility study, Bishop Boyea determined that now is the time to inspire greater generosity from God's people, to do our part in helping to raise up the next generation of Saints and Scholars!

WHAT ARE THE CAMPAIGN GOALS? HOW WILL THE FUNDS RAISED BE USED?

Our \$70 million campaign will address these important priorities:



HOW WILL PARISHES BENEFIT FROM THE CAMPAIGN?

All of the funds raised in this campaign will benefit teachers, students, families and parishes through the fulfillment of the campaign's three main priorities (On Mission, Affordable and Accessible).

The fourth campaign priority is for Local Initiatives. Every parish will receive 20 percent of the funds it raises and collects for projects of its choosing. Once a parish target is reached in payments, the parish will receive 100 percent of any funds raised above its target.

What are the parishes' responsibilities?



Every parish will run the campaign in one of three parish waves. All households in the diocese will be invited to make a gift or pledge in support of the effort.

Pastors, with help from our partners at the Steier Group, will recruit volunteers to serve on a campaign team. This team is primarily responsible for making personal calls and visits to their fellow parishioners to answer questions about the campaign and secure gift decisions. Pastors will also review mailing lists and gift request amounts. A suite of communications will be shared with every parish, to use for pulpit announcements, bulletin announcements, and e-mail/social media. Additionally, every pastor will determine the use of his parish's "local initiative funds".



HOW IS THIS CAMPAIGN BEING FUNDED?

The diocese is covering campaign expenses. This means that 100% of all gifts and pledges will directly support the campaign priorities. Parishes, schools, and families are the sole beneficiaries of funds raised through this campaign. No campaign funds will be used to support diocesan offices or programs.