



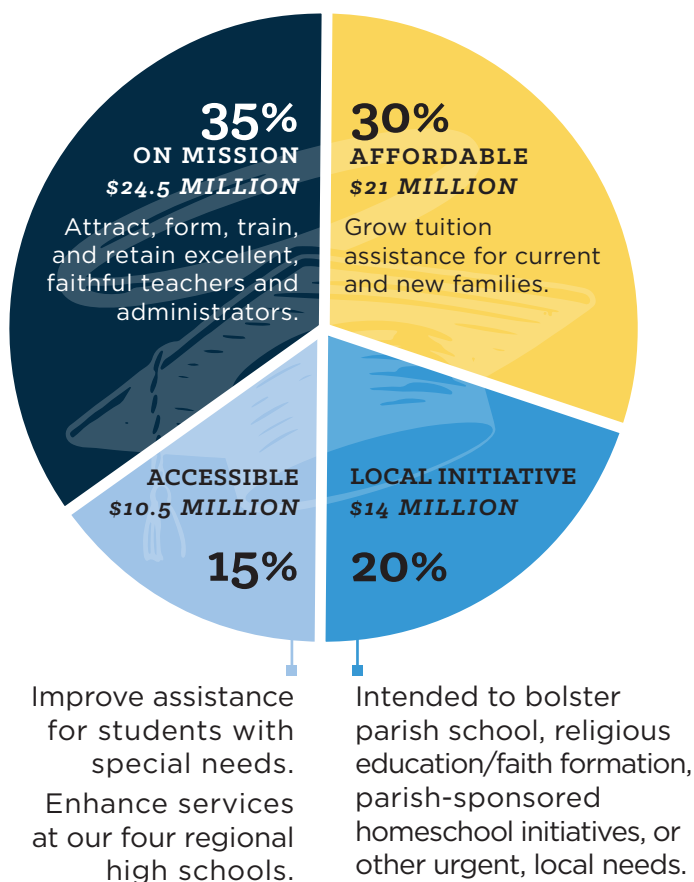
STEWARDSHIP for **SAINTS & SCHOLARS**

The campaign for Catholic education
in the Diocese of Lansing

Frequently Asked Questions

WHAT ARE THE CAMPAIGN GOALS? HOW WILL THE FUNDS RAISED BE USED?

Our \$70 million campaign will address these important priorities:



WHY A DIOCESAN-WIDE CAMPAIGN?

This is about unity. Our parishes are not, nor should they be, isolated from one another or split by school vs no school or any other distinction that does not advance the sacred mission. We cannot educate in isolation, we cannot evangelize in isolation, we cannot perform works of mercy in isolation. We are united and dependent on one another, across parish lines. Since we are united, we best be unified. The future of the Catholic Church depends on our youth, and the future of our youth depends on proper Catholic education and formation.

WE DON'T HAVE A SCHOOL. WHY SHOULD OUR PARISHIONERS SUPPORT THIS CAMPAIGN?

Catholic parishes with schools rely on the support of all their parishioners – not just those with children currently in the school – to be able to offer the blessing of a Catholic education to youths. In the same sense, the wider Church must rely on all its parishes – not just those with schools – to offer the blessing of a Catholic education that is On Mission, Affordable, and Accessible to as many children as possible.

In large part, we will not have many clergy, pastoral ministers, Catholic thought leaders, Catholic legal and academic scholars without Catholic schools. Beyond that, the campaign offers the opportunity for every parish to raise funds for itself that can be used to implement or improve items related to its own religious education and faith formation programs. To sustain and strengthen our Church, all of us must do all we can to train and form the next generations in the faith!



Why can't I just support my parish directly?

We hope you continue to support your parish directly through your regular Sunday giving. This campaign is not intended to divert funds that go toward normal operating needs. The campaign is a special effort to meet needs that go beyond the routine and that can help strengthen Catholic schools and parishes for years to come.



I DONATE TO MY LOCAL SCHOOL(S) DIRECTLY. WHY SHOULD I DONATE TO A DIOCESAN CAMPAIGN WHEN ONLY A PORTION RETURNS TO SUPPORT MY LOCAL SCHOOL'S NEEDS?

Thank you for supporting your local schools! This effort is about growing and strengthening our faith through Catholic schools across the entire diocese. We hope that every family will prayerfully discern their level of support for the campaign.

Your local school will benefit from the contributions of Catholics across the diocese, those at parishes with schools and those without. Likewise, you are invited to support this campaign, secure in the knowledge that your contribution will be helping both your local school and will offer the blessing of a Catholic education that is On Mission, Affordable, and Accessible to as many children as possible. Beyond that, the campaign offers the opportunity for every parish to raise funds for itself that can be used to address important local priorities.

Finally, stewardship means recognizing that everything we have is a gift from God and, thus, being grateful and generous in response to that divine beneficence. It is now our sacred duty and joy to give of our time, talent and treasure for our children, grandchildren and generations hence.

HOW DO YOU DETERMINE THE PLEDGE AMOUNTS THAT FAMILIES ARE ASKED TO CONSIDER?

Each household will be invited to consider prayerfully a specific sacrificial pledge to the campaign. Request amounts are based on several factors: planning study results, families' history of parish support, input from church leadership, and the understanding that for this to be successful it will require sacrificial gifts. In other words, if the amount you are asked for is more than you anticipated, it generally means that you have been a generous supporter of your parish and/or the diocese. We are asking everyone to make a gift or pledge that is meaningful and sacrificial and in a manner that works well for each family. It is not our intention to offend or embarrass anyone. The amount requested is NOT an expectation. It is an invitation to participate. How much you end up pledging is, of course, your own faith-guided decision. We will be grateful for any support you offer.